

vegaview^{2.5}

bright. brighter. vegaview.

 **optrel**[®]
swiss made 



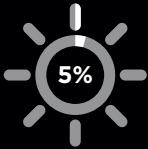
Automatically better welding

Bring light into the darkness!

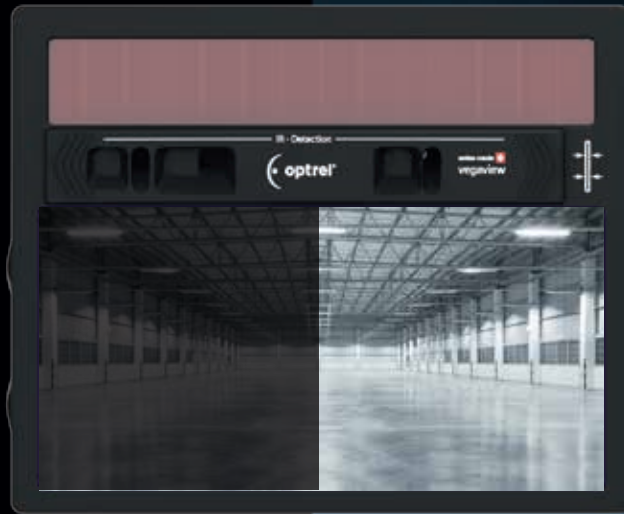
Shade Level

4.0

Industry Standard



Light Transmission



Shade Level

2.5

World Record!



Light Transmission

Until Now

This is how you see your surroundings today when performing tasks like job preparation, weld inspection, or grinding.

Now

The vegaview2.5 opens up a whole new visual experience to you in light state. The much brighter view of your working environment increases both safety and efficiency in the workplace.

Thanks to optrel's latest optical technology, you can enjoy a true color view of the welding process at Shade Levels 8-12.



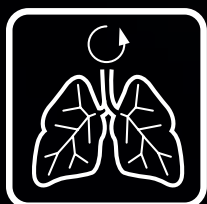
SHADE LEVEL 2.5 / 8-12

Excellent visibility and optimal UV and IR protection in the shade levels 8 to 12.



GRIND MODE

Light state 2.5: For the ultimate in all-round convenience when welding and grinding.



RESPIRATORY PROTECTION

Compatible with the NIOSH-approved optrel e3000 PAPR system.



For an optimum view.

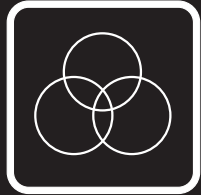
WORLD RECORD ADF!

optrel's new vegaview2.5 offers the clearest view possible in light state with Shade Level 2.5, improving the visibility of welders' environment by 400%! Compared with traditional autodarkening welding helmets, vegaview2.5 offers the world's clearest view in the light state!



LIGHTWEIGHT

The vegaview2.5 is one of the lightest autodarkening helmets on the market. The helmet's ergonomic design minimizes strain on the head and neck, ensuring comfort throughout the work day.



TRUE COLOR FILTER

optrel optimizes the view of colors in the vegaview2.5 with an unprecedented view of realistic color, enabling welders to easily see LEDs on welding devices without raising their helmets.



2+1 YEAR WARRANTY

Register your optrel vegaview2.5 online and receive an additional year of warranty for free.



VEGAVIEW2.5 HIGHLIGHTS:

- Brightest at light state Shade Level 2.5 — a World Record!
- 400% more light transmission at light state
- Infinite adjustable protection from Shade Level 8-12
- Realistic color perception with optrel's True Color Filter
- Helmet specifically designed for overhead welding
- Delay adjustment between 0.1s - 1.0s
- Compatible with NIOSH-approved optrel e3000 PAPR system



TECHNICAL DATA

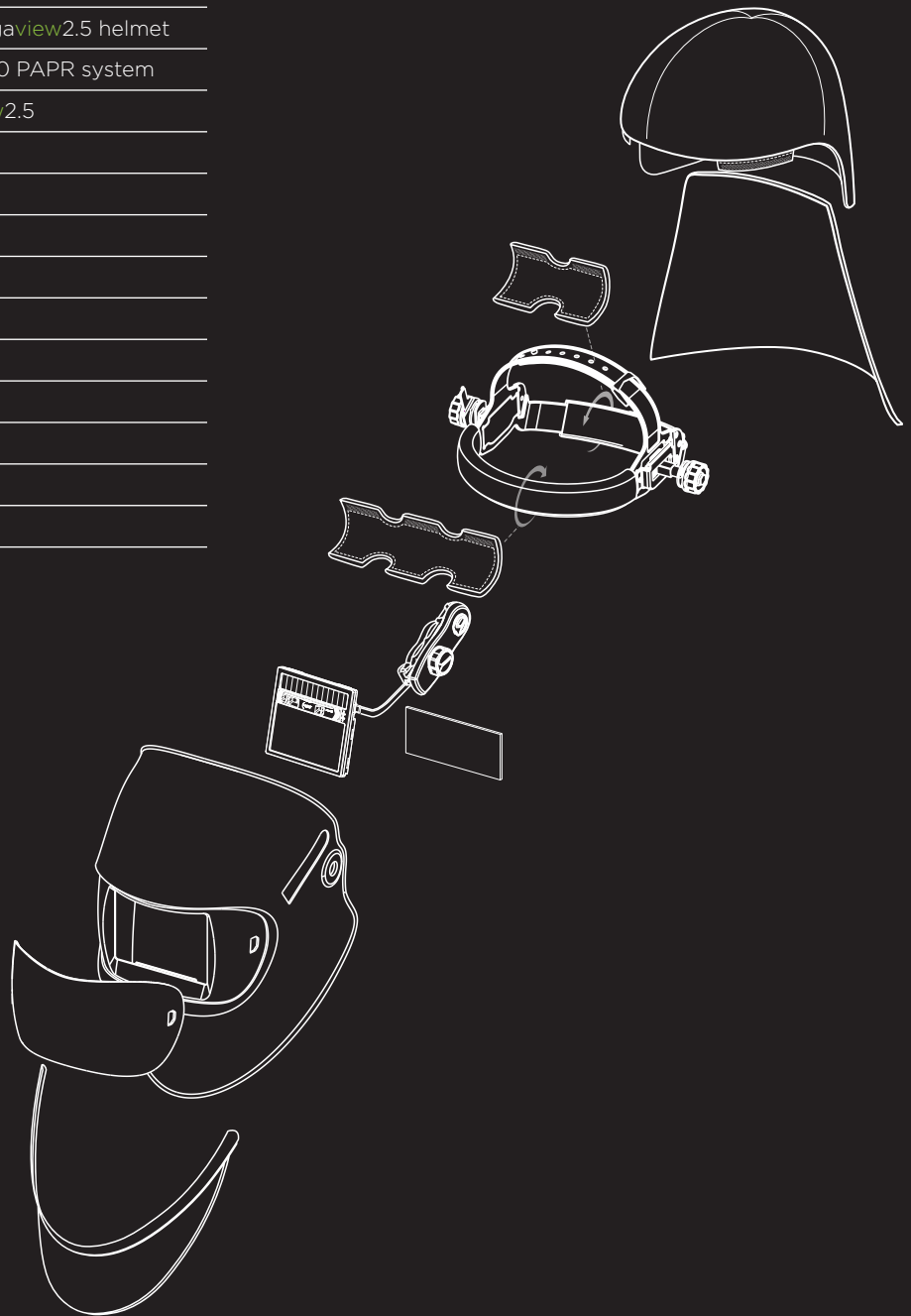
Description	Welding mask with extra bright view in the light state (Shade Level 2.5), True Color Filter, autodarkening filter, infinite shade level selection from Shade Level 8-12, grind mode operation, infinite adjustable delay from 0.1s to 1.0s, LED warning for low battery and grind mode.	Shape Stability	Welding Mask: up to 220°C / 428°F Front Cover Lens: up to 137°C / 279°F
Light Transmission	UV / IR protection (maximum at any shade setting) Infinite exterior shade level setting Visible Range Activated: Shade Level 8-12 Visible Range Not Activated: Shade Level 2.5	Protection for ADF	Reflection-free front cover lens and inside cover lens
Power	2 Li-batteries 3V (CR2032)	Helmet Material	PA6.6
Battery Life	Approx. 3,000 hours (operating)	Helmet Color	Black
Sensors	3 sensors, variable detection angle with movable sensor slider	Operating Temperature	-10°C — 70°C / 14°F — 158°F
Switching Time	Light to Dark: 0.100ms at room temperature 0.070ms at 55°C / 131°F Dark to Light: from 0.1s to 1.0s (adjustable)	Storage Temperature	-20°C — + 80°C / -4°F — 176°F
Classification	Optical Class: 1 Scattered Light: 1 Homogeneity: 1 Angular Dependence: 2	Weight	Welding Helmet: 482g / 17.002 oz.
		Application Ranges	Any Electric Arc Welding Process Electrode Welding (Stick Welding, SMAW) / MIG / MAG (GMAW) / GMAW High Melting Rate Process / Flux Cored Wire Welding / TIG Welding (GTAW) / Plasma Arc Welding / Plasmacutting & Oxy-gas Welding Grind mode at Shade Level 2.5 <i>Prohibited for laser welding!</i>
		Scope of Delivery	Welding helmet, instruction manual, storage bag, batteries, warranty card, and one front cover lens.
		Standards	CE, ANSI, EAC, meets CSA
		Warranty	2 years (except batteries) 1 year warranty extension for online product registration within the first 6 month. http://register.optrel.com

For all, who not only want to weld better,
but also to see better.



ORDERING INFORMATION

Part #	Description
1006.600	vegaview2.5 helmet
4550.104	e3000 PAPR system with vegaview2.5 helmet
4442.801	vegaview2.5 helmet for e3000 PAPR system
5012.470	replacement ADF — vegaview2.5
5000.212	front cover lens (5 pack)
5000.300	inside cover lens (5 pack)
5002.900	parking buddy belt clip
5011.180	hard hat adapter
5011.185	hard hat adapter (slotted)
5003.250	headgear
4028.015	leather chest protector
4028.016	leather neck protector
5004.073	sweatbands — front
5004.020	sweatbands — back



learn more about vegaview2.5 at www.vegaview.com today!



optrel inc. • PO Box 1454 • East Greenwich, RI 02818 USA
www.optrel.com/usa • info_us@optrel.com • ph. 401.398.7240

Like us on Facebook:
www.facebook.com/OptrelUSA